

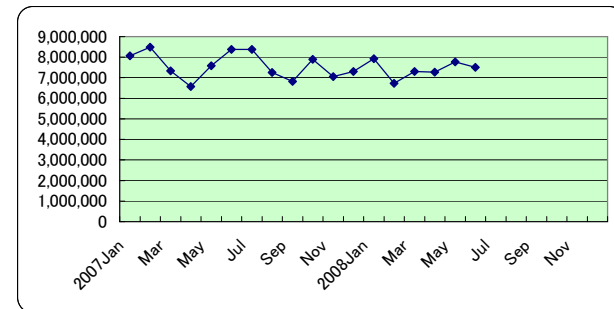
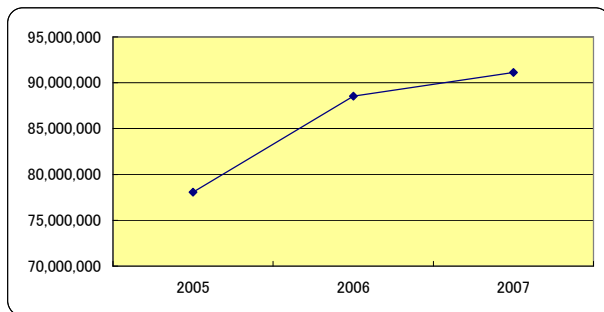
Statistical data of export and import

(Import)

(Unit: 1000 yen)

	Dies for drawing or extruding metal (The following are used)			Tools for pressing, stamping or punching		Moulding boxes for metal foundry	Mould bases	Moulding patterns	Moulds for metal or metal carbides		Moulds for glass	Moulds for mineral mineral materials	Moulds for rubber or plastics		Total	Sum total
	Sintered metal carbide or cermets	Natural or man- made diamonds	n.e.s.	Metal carbide cermets	Things other than the following				Injection or compression types	Things other than the following			Injection or compression types	Things other than the following		
2005			1,779,157		8,030,618	810,231	2,627,218	333,469	7,843,789	3,139,994	523,774	403,146	49,021,322	3,545,736	78,058,454	
2006			2,396,541		10,259,823	1,025,676	3,222,659	452,126	8,834,171	3,449,264	574,978	920,351	53,232,726	4,178,168	88,546,483	
2007			2,256,616		10,122,853	1,037,232	2,914,427	444,121	8,127,946	2,681,855	469,896	1,340,836	57,817,168	3,919,884	91,132,834	
2005			2,011,584		8,622,318	723,835	3,079,484	360,627	8,468,165	3,294,071	523,312	378,203	50,889,608	3,636,325	81,987,532	
2006			2,214,181		10,355,928	1,077,241	3,099,954	485,053	8,816,367	3,494,700	584,391	941,551	55,785,501	4,256,276	91,111,143	
2007			2,264,433		9,993,649	1,089,403	2,924,250	398,335	8,145,648	2,417,600	492,860	1,336,989	56,151,391	3,990,752	89,205,310	
2007Jan			174,601		775,638	62,493	234,021	38,541	809,642	441,207	41,556	18,847	5,156,419	308,254	8,061,219	
Feb			162,552		960,828	110,543	195,966	27,575	846,447	193,998	29,209	33,379	5,561,492	359,179	8,481,168	16,542,387
Mar			187,718		801,936	45,408	268,481	61,551	509,288	189,153	41,967	58,502	4,869,136	305,617	7,338,757	23,881,144
Apr			143,111		876,371	41,894	214,837	29,508	598,085	275,525	43,825	17,279	4,057,594	273,744	6,571,773	30,452,917
May			189,952		805,321	108,263	260,648	24,757	867,886	217,530	50,050	62,903	4,738,899	264,552	7,590,761	38,043,678
Jun			179,200		1,060,655	160,519	307,936	27,291	877,327	165,346	46,181	744,838	4,580,043	234,072	8,383,408	46,427,086
Jul			213,808		759,012	77,141	256,711	38,405	801,499	251,495	65,489	246,331	5,380,795	279,387	8,370,073	54,797,159
Aug			196,561		800,972	58,743	208,735	24,368	561,775	204,679	37,785	15,937	4,870,534	281,601	7,261,690	62,058,849
Sep			221,721		843,853	40,752	156,096	75,625	478,726	207,652	22,618	38,248	4,454,960	285,264	6,825,515	68,884,364
Oct			207,267		795,465	93,939	228,489	22,529	645,788	202,736	23,831	26,100	5,134,772	510,091	7,891,007	76,775,371
Nov			176,683		671,265	151,903	326,876	35,274	428,510	155,705	30,953	41,069	4,571,562	463,272	7,053,072	83,828,443
Dec			203,442		971,537	85,634	255,631	38,697	702,973	176,829	36,432	37,403	4,440,962	354,851	7,304,391	91,132,834
2008Jan			187,859		787,839	49,419	211,069	39,315	845,255	281,369	64,684	25,990	5,096,865	338,021	7,927,685	
Feb			152,345		603,326	80,550	249,231	17,294	740,665	149,243	31,396	36,449	4,321,895	342,027	6,724,421	14,652,106
Mar			192,484		1,018,033	140,646	247,991	25,272	597,159	129,491	39,616	44,442	4,502,510	363,870	7,301,514	21,953,620
Apr			169,368		906,056	45,047	173,133	27,633	715,695	196,711	56,337	31,453	4,651,661	298,555	7,271,649	29,225,269
May			189,666		1,208,555	29,446	251,236	72,188	622,976	268,038	48,803	24,819	4,831,059	229,525	7,776,311	37,001,580
Jun			184,687		990,412	33,935	200,855	35,847	372,098	202,530	50,292	46,037	5,054,412	329,009	7,500,114	44,501,694
Jul																
Aug																
Sep																
Oct																
Nov																
Dec																

(Source : JAPAN TARIFF ASSOCIATION)



This statistics a revised edition

JAPAN DIE & MOLD INDUSTRY ASSOCIATION

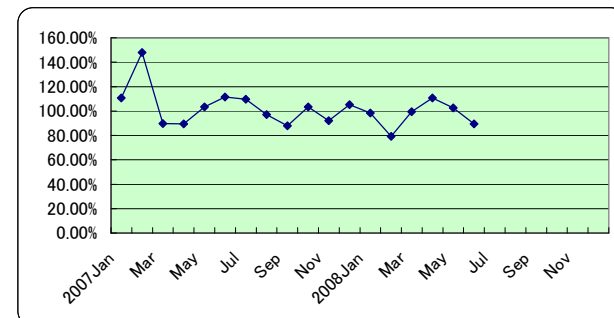
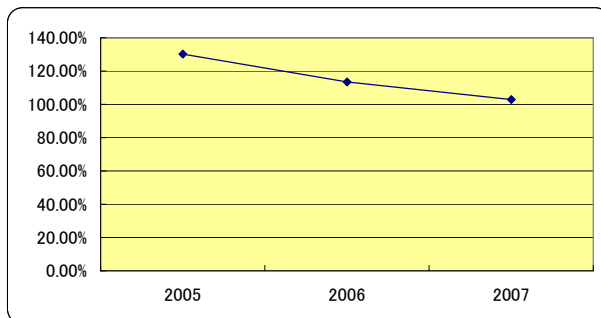
Statistical data of export and import

(Import)

(Unit:%)

	Dies for drawing or extruding metal (The following are used)			Tools for pressing, stamping or punching		Moulding boxes for metal foundry	Mould bases	Moulding patterns	Moulds for metal or metal carbides		Moulds for glass	Moulds for mineral mineral materials	Moulds for rubber or plastics		Total
	Sintered metal carbide or cermets	Natural or man- made diamonds	n.e.s.	Metal carbide cermets	Things other than the following				Injection or compression types	Things other than the following			Injection or compression types	Things other than the following	
2005			118.93%		134.26%	86.61%	145.46%	119.40%	177.34%	106.77%	87.50%	110.90%	130.25%	107.41%	130.25%
2006			134.70%		127.76%	126.59%	122.66%	135.58%	112.63%	109.85%	109.78%	228.29%	108.59%	117.84%	113.44%
2007			94.16%		98.66%	101.13%	90.44%	98.23%	92.01%	77.75%	81.72%	145.69%	108.61%	93.82%	102.92%
2005			103.00%		148.12%	149.76%	307.00%	196.06%	127.31%	157.77%	91.45%	245.65%	144.12%	132.15%	144.14%
2006			110.07%		120.11%	148.82%	100.66%	134.50%	104.11%	106.09%	111.67%	248.95%	109.62%	117.05%	111.13%
2007			102.27%		96.50%	101.13%	94.33%	82.12%	92.39%	69.18%	84.34%	142.00%	100.66%	93.76%	97.91%
2007Jan			103.06%		101.84%	117.69%	92.94%	181.10%	119.59%	170.22%	94.67%	73.60%	108.38%	114.43%	110.58%
Feb			59.07%		150.83%	192.43%	92.24%	71.40%	158.64%	106.98%	107.93%	93.54%	159.94%	137.12%	147.82%
Mar			73.74%		76.84%	80.60%	75.22%	176.69%	52.36%	56.08%	129.68%	207.17%	103.48%	84.05%	89.65%
Apr			76.67%		82.28%	43.43%	80.35%	67.55%	68.83%	98.68%	106.43%	56.62%	101.27%	59.80%	89.49%
May			98.41%		96.61%	152.96%	93.52%	93.68%	131.36%	64.05%	117.79%	527.67%	103.53%	83.13%	103.24%
Jun			110.70%		172.72%	230.21%	137.50%	37.24%	103.51%	61.15%	223.68%	253.55%	103.11%	46.88%	111.53%
Jul			114.64%		90.74%	85.53%	103.34%	81.72%	157.74%	77.22%	179.08%	872.68%	111.67%	55.86%	109.76%
Aug			91.95%		93.62%	48.62%	89.06%	48.16%	74.99%	132.48%	65.23%	5.03%	109.61%	98.65%	97.05%
Sep			131.36%		108.62%	49.37%	64.15%	247.15%	65.08%	38.25%	31.25%	112.04%	92.49%	105.52%	87.79%
Oct			96.86%		87.03%	153.23%	66.98%	82.17%	71.23%	92.08%	26.14%	63.47%	116.75%	118.89%	103.23%
Nov			84.82%		69.86%	137.51%	110.85%	211.72%	62.20%	47.45%	49.30%	76.97%	98.23%	167.31%	92.14%
Dec			123.71%		101.11%	54.73%	94.92%	92.77%	102.58%	83.91%	78.32%	179.30%	107.39%	144.23%	105.28%
2008Jan			107.59%		101.57%	79.08%	90.19%	102.01%	104.40%	63.77%	155.66%	137.90%	98.85%	109.66%	98.34%
Feb			93.72%		62.79%	72.87%	127.18%	62.72%	87.50%	76.93%	107.49%	109.20%	77.71%	95.22%	79.29%
Mar			102.54%		126.95%	309.74%	92.37%	41.06%	117.25%	68.46%	94.40%	75.97%	92.47%	119.06%	99.49%
Apr			118.35%		103.39%	107.53%	80.59%	93.65%	119.66%	71.39%	128.55%	182.03%	114.64%	109.06%	110.65%
May			99.85%		150.07%	27.20%	96.39%	291.59%	71.78%	123.22%	97.51%	39.46%	101.94%	86.76%	102.44%
Jun			103.06%		93.38%	21.14%	65.23%	131.35%	42.41%	122.49%	108.90%	6.18%	110.36%	140.56%	89.46%
Jul															
Aug															
Sep															
Oct															
Nov															
Dec															

(Source : JAPAN TARIFF ASSOCIATION)



This statistics a revised edition

JAPAN DIE & MOLD INDUSTRY ASSOCIATION