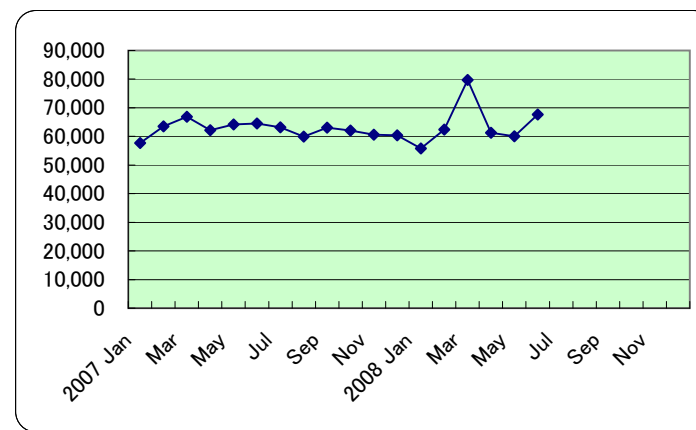
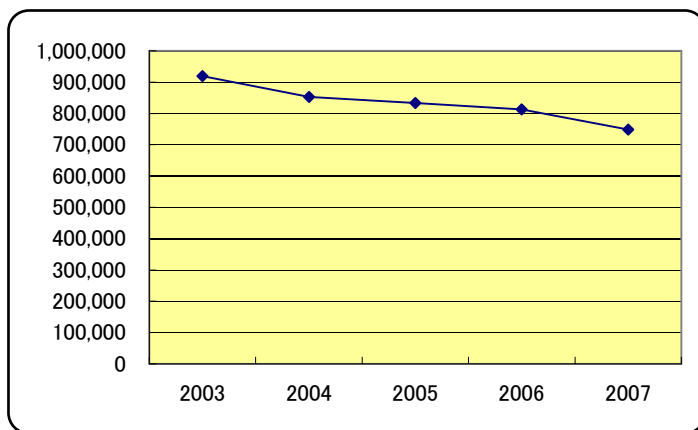


Production actual results (Quantity(n))

「 Machinery Statistics 」 Ministry of Economy, Trade and Industry

*A right column is for the inside manufacture(Unit:group)

	Stamping die		Forging die		Casting molds		Die casting die		Plastic molds		Glassmolds		Rubber molds		Powdered metal molds		Total	Sum total	
2003	199,582	52,606	126,146	34,799	5,273	1,314	8,885	1,459	74,754	7,558	406,404		14,802	1,472	83,821	7,840	919,667	107,048	
2004	191,064	47,449	118,726	33,779	5,136	1,275	8,901	1,378	64,556	7,858	387,020		12,511	1,468	65,187	7,272	853,101	100,479	
2005	178,311	48,064	131,233	38,946	6,301	1,038	9,725	1,415	54,213	7,774	371,311		12,719	1,443	69,655	7,732	833,468	106,412	
2006	170,325	50,573	147,698	44,571	7,880	1,163	12,086	1,975	53,685	8,589	336,950		13,077	1,437	71,575	7,301	813,276	115,609	
2007	152,141	41,814	139,582	40,042	7,615	1,852	11,459	2,008	50,443	8,241	302,878	-	13,171	1,502	70,930	6,328	748,219	101,787	
2005	178,012	49,044	135,430	39,412	6,971	1,066	10,467	1,576	53,156	7,975	358,370		12,680	1,463	70,713	7,554	825,799	108,090	H17.4/1-H18.3/31
2006	164,599	48,713	147,460	45,393	7,410	1,172	11,843	1,998	52,157	8,457	323,464		13,193	1,483	70,810	7,247	790,879	114,463	H18.4/1-H19.3/31
2007	152,141	41,814	139,582	40,042	7,615	1,852	11,459	2,008	50,443	8,241	302,878	-	13,171	1,502	70,930	6,328	758,071	101,750	H19.4/1-H20.3/31
2007 Jan	12,462	3,335	11,253	3,412	518	73	832	146	4,130	699	22,505	-	1,021	145	5,020	549	57,741	8,359	
Feb	12,854	3,393	12,004	3,577	565	142	981	167	4,197	574	26,199	-	1,069	110	5,617	530	63,486	8,493	121,227
Mar	14,483	3,710	11,769	3,773	601	100	1,083	262	4,770	874	26,386	-	1,200	155	6,544	672	66,836	9,546	188,063
Apr	12,444	3,520	11,502	3,362	1,309	869	924	128	4,133	625	24,792	-	1,121	129	5,944	567	62,169	9,200	250,232
May	13,318	3,387	11,881	3,436	475	82	928	134	4,071	691	26,090	-	992	98	6,450	611	64,205	8,439	314,437
Jun	13,601	3,765	12,230	3,495	501	65	977	175	4,128	660	25,365	-	1,142	121	6,616	502	64,560	8,783	378,997
Jul	12,668	3,334	11,243	3,536	506	52	932	152	4,080	681	27,175	-	1,171	161	5,387	523	63,162	8,439	442,159
Aug	11,426	3,171	10,614	2,801	581	152	924	145	4,633	677	24,866	-	1,045	137	5,889	430	59,978	7,513	502,137
Sep	11,676	3,361	11,377	2,853	614	74	1,046	205	4,108	754	27,583	-	1,070	115	5,613	494	63,087	7,856	565,224
Oct	12,956	3,781	12,708	3,189	581	85	951	171	3,977	635	23,603	-	1,160	109	6,099	538	62,035	8,508	627,259
Nov	12,216	3,504	11,966	3,420	726	96	961	164	3,841	665	23,510	-	1,045	113	6,281	480	60,546	8,442	687,805
Dec	12,037	3,553	11,035	3,188	638	62	920	159	4,375	706	24,804	-	1,135	109	5,470	432	60,414	8,209	748,219
2008 Jan	11,585	3,396	11,486	3,188	518	71	892	166	3,925	548	21,120		1,021	97	5,259	459	55,806	7,925	
Feb	12,337	3,469	11,398	3,648	639	78	889	150	4,636	741	24,960		1,130	104	6,447	763	62,436	8,953	118,242
Mar	14,514	3,513	25,623	3,755	678	84	1,000	220	4,719	853	25,769		1,168	140	6,202	918	79,673	9,483	197,915
Apr	13,019	3,550	9,512	2,606	614	86	877	90	3,947	530	26,185		1,101	108	6,008	843	61,263	7,813	259,178
May	12,664	3,744	11,048	3,345	568	95	870	123	3,834	608	23,035		1,029	115	6,978	1,546	60,026	9,576	319,204
Jun	14,364	3,633	12,259	3,716	617	66	864	156	3,843	671	27,870		1,063	86	6,808	1,577	67,688	9,905	386,892
Jul																			
Aug																			
Sep																			
Oct																			
Nov																			
Dec																			



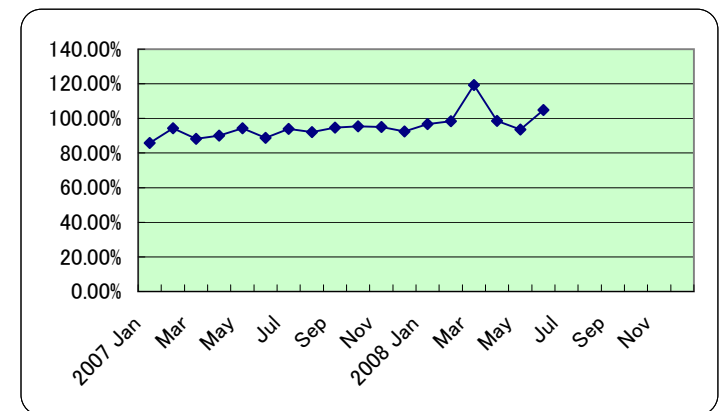
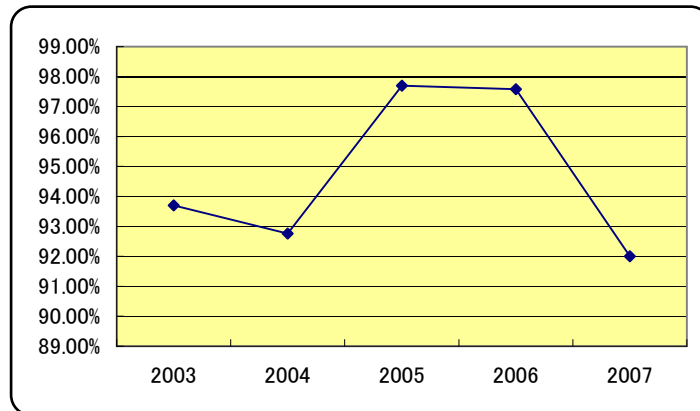
This statistics a revised edition

Production actual results (Quantity(n))

「Machinery Statistics」

*A right column is for the inside manufacture(Unit.%)

	Stamping die	Forging die	Casting molds	Die casting die	Plastic molds	Glassmolds	Rubber molds	Powdered metal molds	Total									
2003	99.12%	96.65%	112.89%	104.91%	104.66%	99.92%	108.17%	81.51%	64.58%	93.97%	94.53%	-	69.99%	117.57%	94.90%	101.88%	93.70%	99.40%
2004	95.73%	90.20%	94.12%	97.07%	97.40%	97.03%	100.18%	94.45%	86.36%	103.97%	95.23%	-	84.52%	99.73%	77.77%	92.76%	92.76%	93.86%
2005	93.33%	101.30%	110.53%	115.30%	122.68%	81.41%	109.26%	102.69%	83.98%	98.93%	95.94%	-	101.66%	98.30%	106.85%	106.33%	97.70%	105.90%
2006	95.52%	105.22%	112.55%	114.44%	125.06%	112.04%	124.28%	139.58%	99.03%	110.48%	90.75%	-	102.81%	99.58%	102.76%	94.43%	97.58%	108.64%
2007	89.32%	82.68%	94.51%	89.84%	96.64%	159.24%	94.81%	101.67%	93.96%	95.95%	89.89%	-	100.72%	104.52%	99.10%	86.67%	92.00%	88.04%
2005	93.32%	103.03%	113.37%	113.57%	128.38%	82.97%	116.47%	120.93%	87.60%	100.70%	90.96%	-	102.32%	101.95%	106.34%	101.60%	96.22%	
2006	92.43%	99.22%	108.82%	115.18%	106.76%	109.94%	113.37%	126.78%	98.05%	105.47%	90.27%	-	104.41%	101.37%	100.13%	95.88%	95.77%	
2007	92.43%	85.84%	94.66%	88.21%	102.77%	158.02%	96.76%	100.50%	96.71%	97.45%	93.64%	-	99.83%	101.28%	100.17%	87.32%	95.85%	88.89%
2007 Jan	89.42%	99.34%	97.85%	99.80%	87.80%	96.05%	90.14%	90.68%	84.51%	86.94%	78.82%	-	103.76%	121.85%	83.96%	98.39%	85.73%	98.41%
Feb	88.44%	75.62%	112.65%	119.83%	69.84%	167.06%	96.56%	109.87%	95.32%	81.77%	90.11%	-	101.23%	103.77%	96.93%	94.81%	94.27%	93.58%
Mar	84.92%	83.30%	89.78%	106.70%	79.60%	68.97%	90.25%	109.62%	89.41%	113.07%	85.26%	-	105.82%	111.51%	106.03%	97.67%	88.28%	95.71%
Apr	85.80%	84.03%	99.44%	93.99%	240.63%	1609.26%	94.58%	115.32%	94.53%	100.64%	81.32%	-	105.95%	127.72%	107.90%	79.75%	90.08%	98.25%
May	92.46%	76.89%	85.51%	96.98%	73.76%	132.26%	95.28%	100.75%	92.88%	114.78%	98.24%	-	111.34%	96.08%	101.14%	108.53%	94.25%	89.68%
Jun	91.21%	80.11%	96.71%	84.03%	74.89%	50.00%	104.49%	149.57%	88.47%	88.00%	81.94%	-	100.71%	104.31%	97.94%	76.52%	88.84%	82.64%
Jul	87.51%	71.58%	88.93%	93.45%	77.73%	59.09%	91.46%	86.86%	98.62%	108.79%	99.34%	-	99.57%	131.97%	93.09%	81.34%	93.93%	83.59%
Aug	86.68%	86.85%	84.95%	83.31%	102.11%	197.40%	99.78%	97.32%	104.30%	98.83%	94.43%	-	92.72%	108.73%	96.53%	74.14%	92.03%	87.06%
Sep	81.75%	70.91%	93.48%	78.68%	97.93%	64.91%	101.06%	103.54%	90.11%	98.56%	101.27%	-	96.40%	91.27%	99.29%	90.15%	94.62%	77.65%
Oct	100.97%	93.17%	89.90%	60.10%	73.73%	47.22%	90.57%	91.44%	97.17%	85.93%	95.96%	-	97.64%	81.34%	97.01%	79.35%	95.48%	75.41%
Nov	99.76%	91.87%	101.98%	94.42%	119.60%	98.97%	94.96%	96.47%	92.22%	89.38%	86.47%	-	93.81%	83.09%	111.33%	74.77%	95.03%	91.51%
Dec	86.21%	87.51%	98.98%	87.29%	101.75%	112.73%	90.28%	86.89%	103.11%	90.75%	89.67%	-	102.71%	99.09%	99.13%	90.95%	92.54%	88.15%
2008 Jan	92.96%	101.83%	102.07%	93.43%	100.00%	97.26%	107.21%	113.70%	95.04%	78.40%	93.85%	-	100.00%	66.90%	104.76%	83.61%	96.65%	94.81%
Feb	95.98%	102.24%	94.95%	101.98%	113.10%	54.93%	90.62%	89.82%	110.46%	129.09%	95.27%	-	105.71%	94.55%	114.78%	143.96%	98.35%	105.42%
Mar	100.21%	94.69%	217.72%	99.52%	112.81%	84.00%	92.34%	83.97%	98.93%	97.60%	97.66%	-	97.33%	90.32%	94.77%	136.61%	119.21%	99.34%
Apr	104.62%	100.85%	82.70%	77.51%	46.91%	9.90%	94.91%	70.31%	95.50%	84.80%	105.62%	-	98.22%	83.72%	101.08%	148.68%	98.54%	84.92%
May	95.09%	110.54%	92.99%	97.35%	119.58%	115.85%	93.75%	91.79%	94.18%	87.99%	88.29%	-	103.73%	117.35%	108.19%	253.03%	93.49%	113.47%
Jun	105.61%	96.49%	100.24%	106.32%	123.15%	101.54%	88.43%	89.14%	93.10%	101.67%	109.88%	-	93.08%	71.07%	102.90%	314.14%	104.85%	112.77%
Jul																		
Aug																		
Sep																		
Oct																		
Nov																		
Dec																		



This statistics a revised edition

JAPAN DIE & MOLD INDUSTRY ASSOCIATION